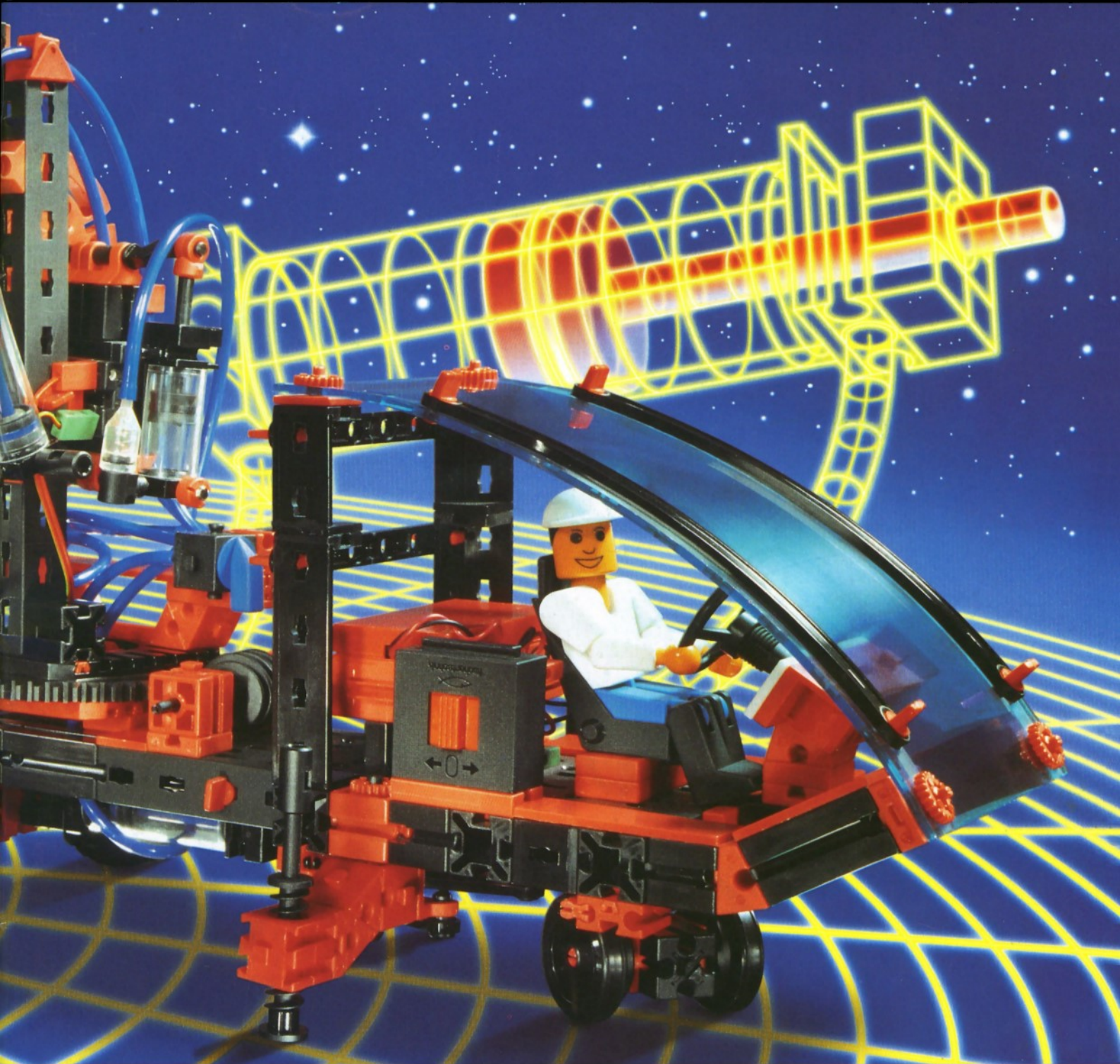
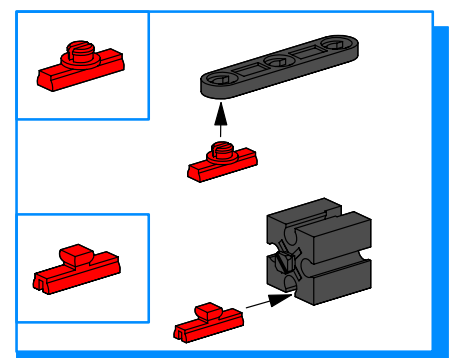
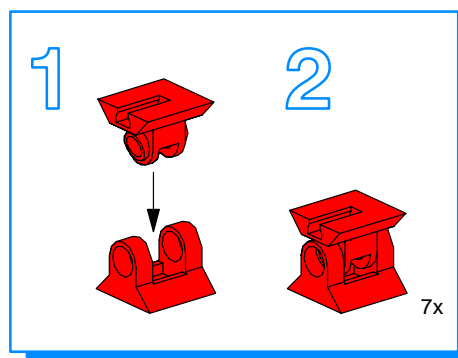
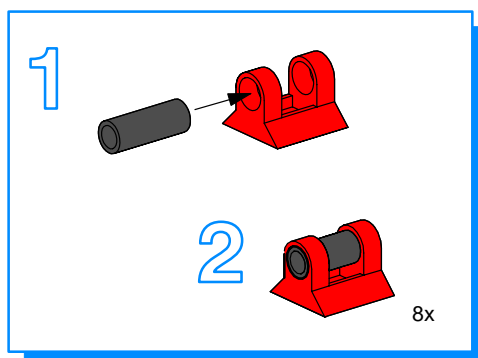
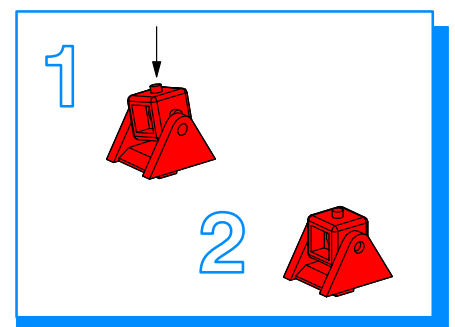
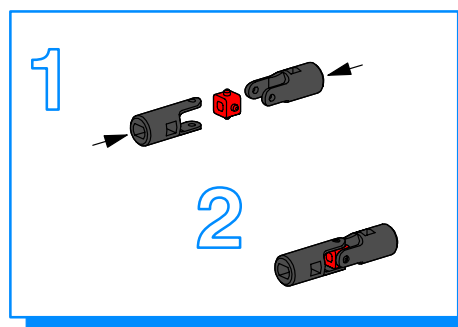
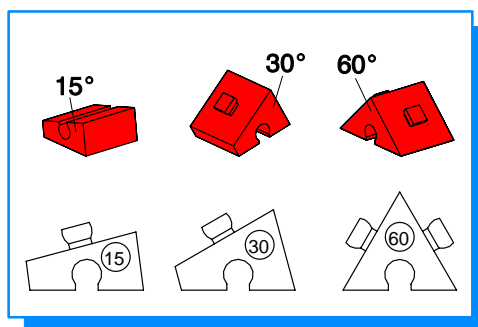
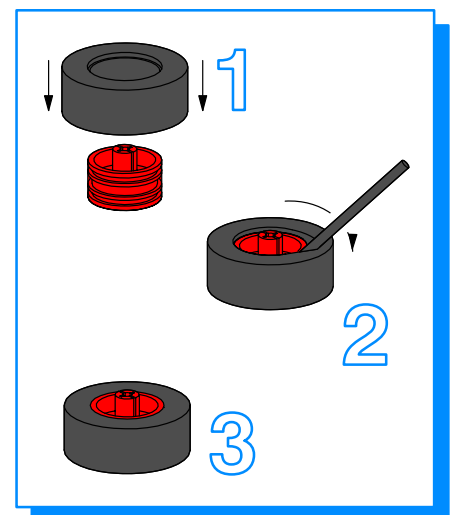
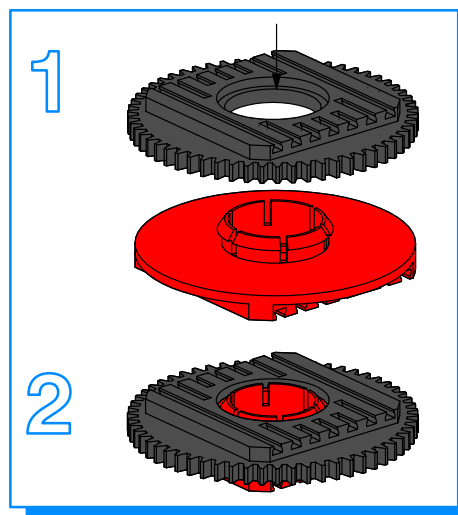
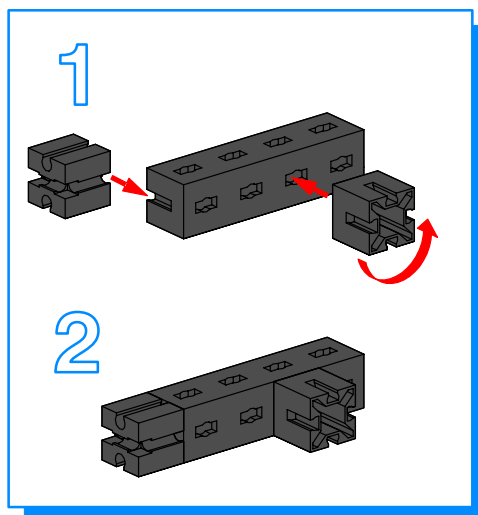
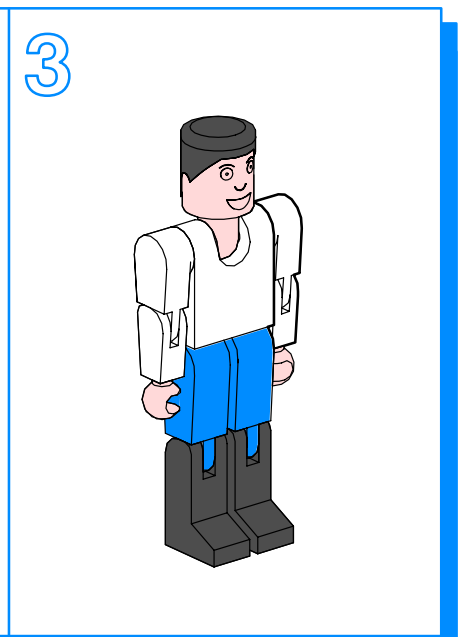
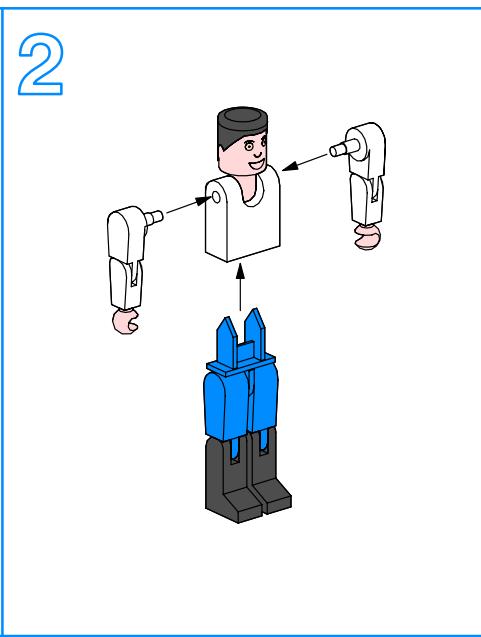
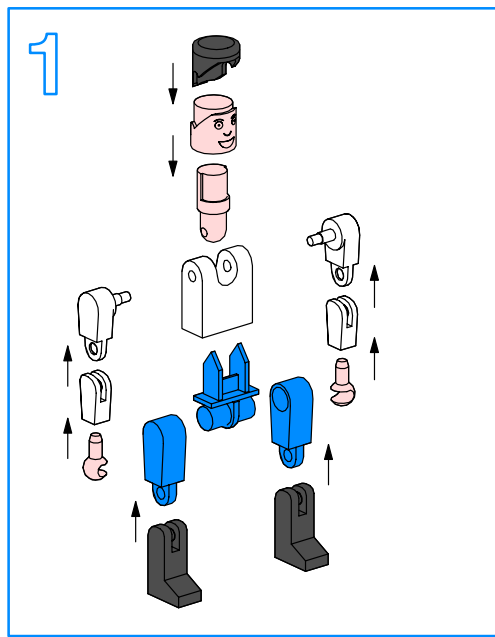


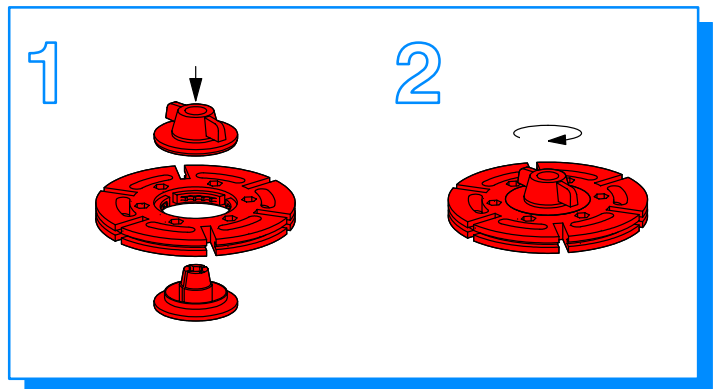
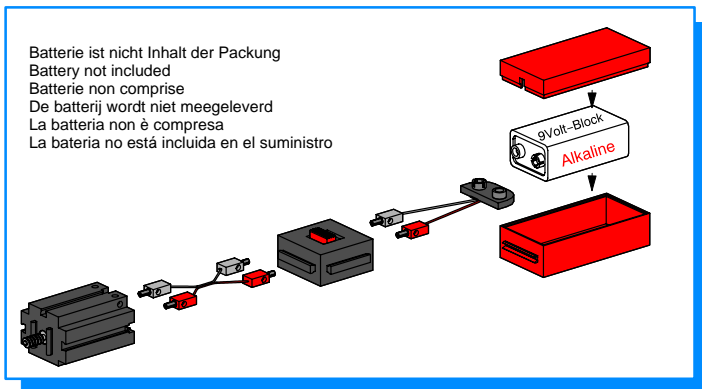
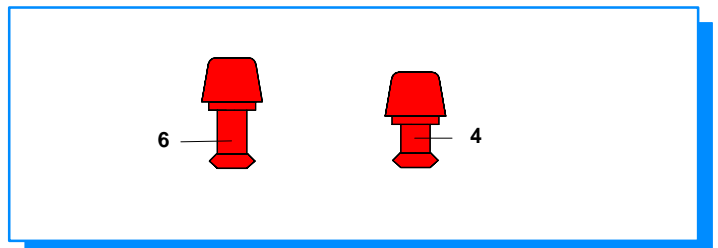
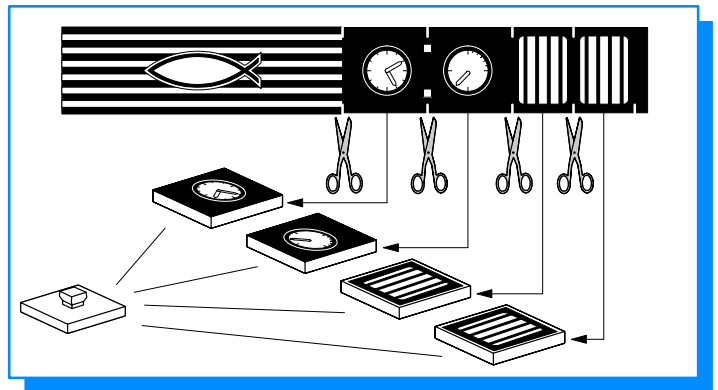
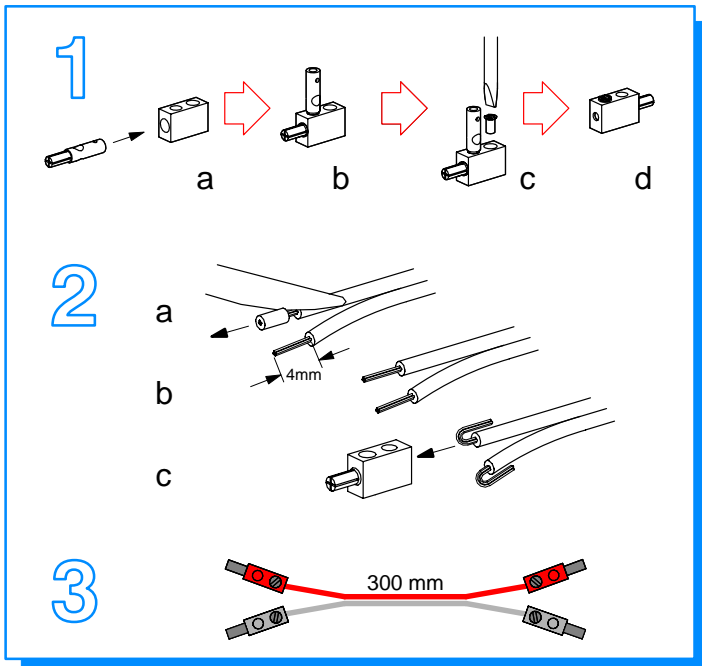
TECHNIC UNDER PRESSURE

PROFI



fischertechnik® 





Alle Einzelteile, insbesondere bewegliche Teile sind falls notwendig zu warten und zu reinigen.

All components, especially moving parts, should be maintained and cleaned as necessary.

Toutes les pièces détachées et en particulier les pièces mobiles, sont, si nécessaire, à entretenir et à nettoyer.

Alle onderdelen, vooral de bewegende delen, kunnen, indien noodzakelijk, onderhouden en gereinigd worden.

Es necesario limpiar y mantener en buen estado todas las diferentes piezas – especialmente las piezas móviles.

Provvedere all'occorrenza alla manutenzione e alla pulizia di tutti i particolari, specialmente le parti mobili.

Achtung
Verletzungsgefahr an Bauteilen mit funktionsbedingten scharfen Kanten und Spitzen!

Caution
 Be careful not to hurt yourself on components with sharp or pointed edges!

Attention
 Risque de blessure sur les éléments comportant des arêtes et pointes vives indispensables au bon fonctionnement!

Let op
 U kunt zich bezeren aan bouwstenen met scherpe randen of punten!

Attenzione
 Esiste il pericolo di lesione con i pezzi di costruzione che hanno bordi e punte spigolosi necessari per la funzionalità del pezzo!

Precaución
 Peligro de heridas ocasionadas por componentes puntiagudos o de cantos afilados que estén en funcionamiento!

oder
 or
 ou
 of
 o

1 Batterie 9Volt-Block Alkaline oder 1 NC-Akku 9V

- w Leere Akkus zum Laden entnehmen.
- w Verbrauchte Batterien dem Sondermüll zuführen.

9V rechargeable battery or 9 V alkaline dry cell

- w Remove discharged battery and place in charger for recharging.
- w Discard spent dry cells at special waste disposal centre.

pile 9V ou accu 9V

- w Pour recharger les accus vides, il faut les sortir et les placer dans le chargeur.
- w Jeter les piles usagées dans un conteneur spécial réservé à cet effet.

alkaline batterije of oplaadbare batterije (9Volt)

- w Voor het opladen van batterijen de lege batterijen uit nemen en met behulp van het oplaadapparaat opladen.
- w Afleveren gebruikte batterijen bij het klein chemisch afval (KCA).

batteria normale o batteria ad accumulatore (9Volt)

- w Togliere le batterie ad accumulatore scariche per ricaricarle.
- w Gettare le batterie scariche negli appositi cassonetti di raccolta differenziata.

pila alcalina bloque de 9 Voltios o acumulador NC de 9 Voltios

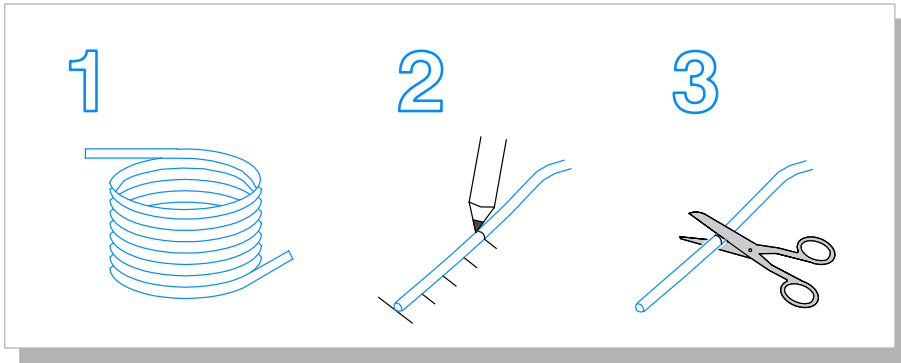
- w Retirar el acumulador descargado y colocarlo en el cargador
- w Retirar las baterías viejas, desechándolas en un depósito de basuras especiales.

Schlauchzuschnitte

Hose cut to length
Découpes de tuyau

Slangdelen

Recortes de tubos flexibles
Pezzi di tubo flessibile



18 mm
5x

23 mm
3x

35 mm
2x

40 mm
1x

46 mm
1x

60 mm
3x

65 mm
4x

70 mm
2x

90 mm
3x

100 mm
1x

140 mm
1x

160 mm
2x

180 mm
1x

